

KOSPI 6,300 시대 개막

2026년 2월 26일
글로벌 시장 브리핑

역사적 신고가와 '1조 달러 클럽'의 탄생



국내 증시 폭등

6,307.27

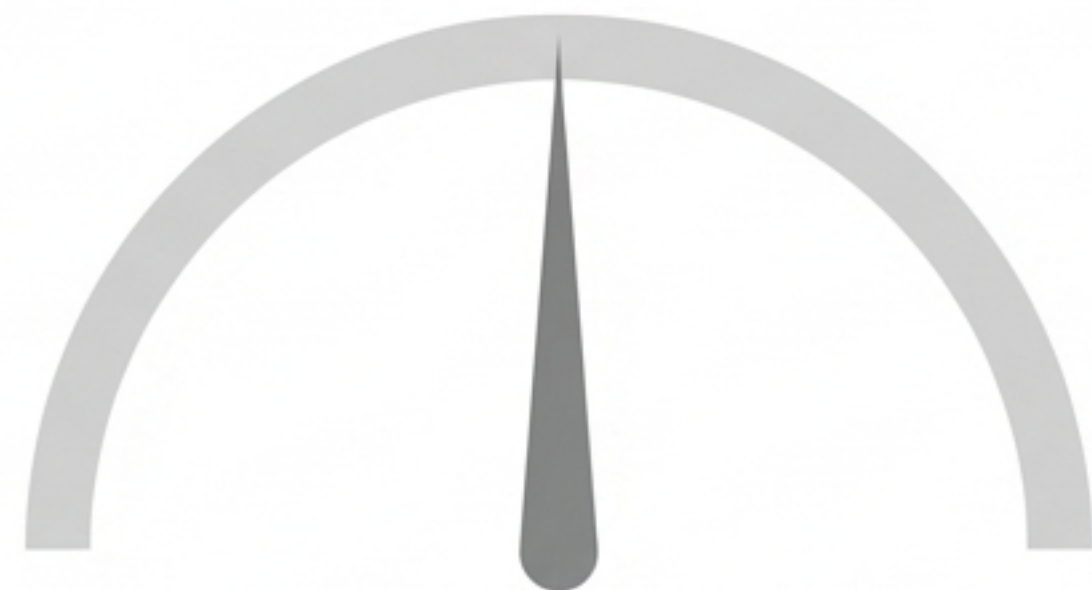
▲ 3.67% (Record High)

KOSDAQ 1,188.15 ▲ 1.97%

USD/KRW 1,426.21 ▼ 5.30원

Foreigners Net **Sell (-7.74M)** in **Deep Navy Blue**,
Domestic Buying **Strong (+1.61M)** in **Signal Red**

글로벌 증시 숨고르기



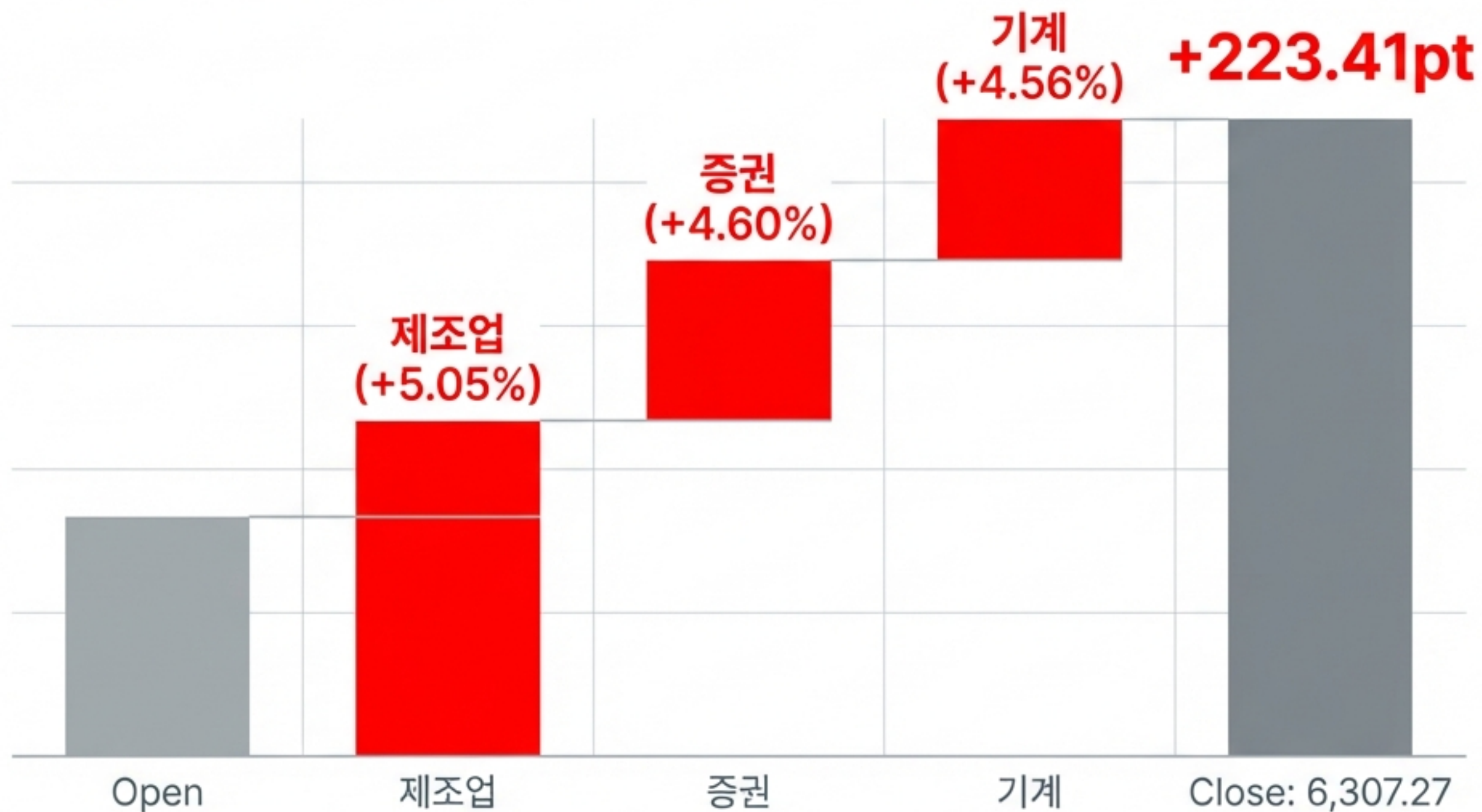
US Market Momentum: Neutral

S&P 500: 0.00%

Nasdaq: 0.00%

Dow: +0.13%

제조업과 금융이 이끈 6,300 돌파 6,300 돌파



“

삼성증권: 연내 코스피
7,000 돌파 전망

반도체 슈퍼사이클: 삼성전자와 SK하이닉스

삼성전자 (Samsung Elec)

1조 달러 클럽 진입 (\$1T Club)

218,000원 ▲ 7.13%

시가총액: 1,290.5조원



SK하이닉스 (SK Hynix)

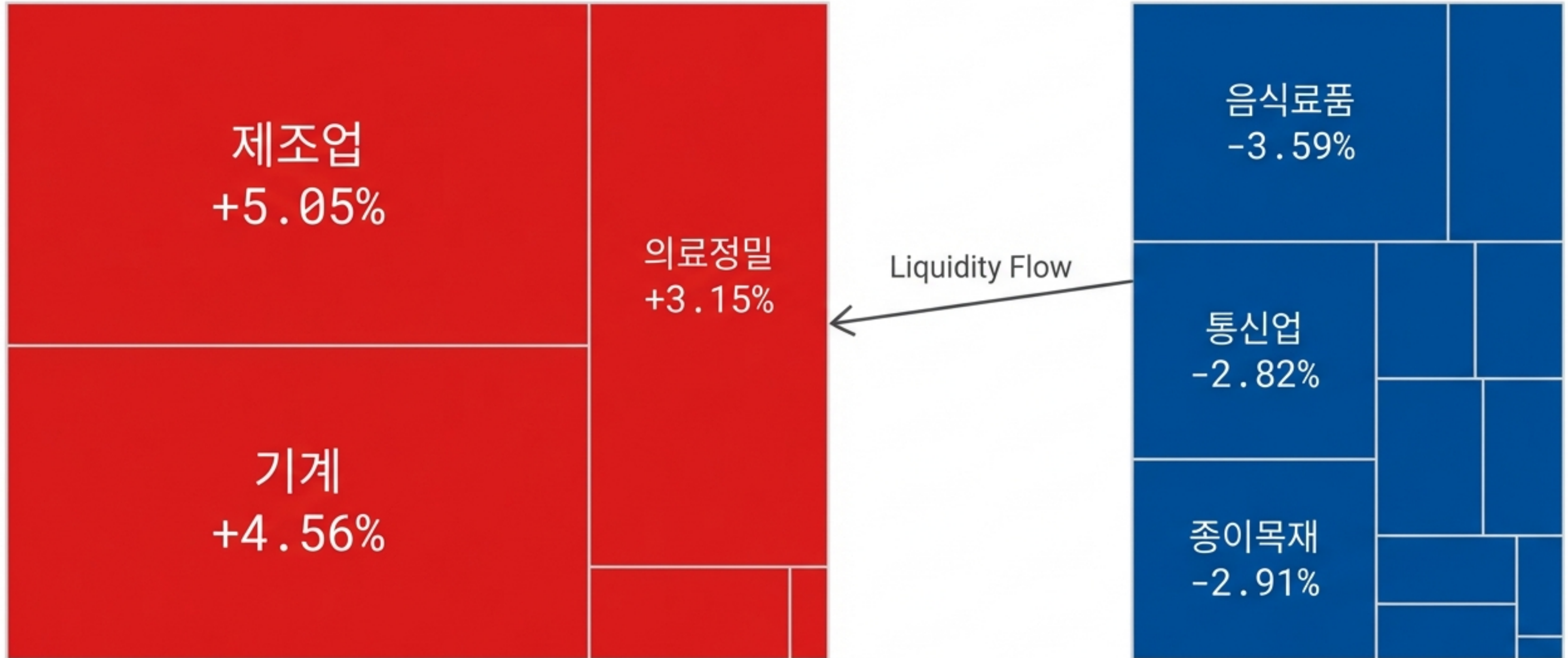
1,099,000원 ▲ 7.96%

시가총액: 783.3조원



AI 투자 확대가 시장을 주도하다

시장 양극화: 성장주 쓸림 심화



미국 증시: 숨 고르기와 관망세



S&P 500

6,946.13 (+0.00%)



NASDAQ

22,863.68 (+0.00%)



DOW

49,357.63 (+0.13%)

Sector Best: 부동산 (Real Estate) **+7.42%**

Sector Worst: 유틸리티 (Utilities) **-1.70%**

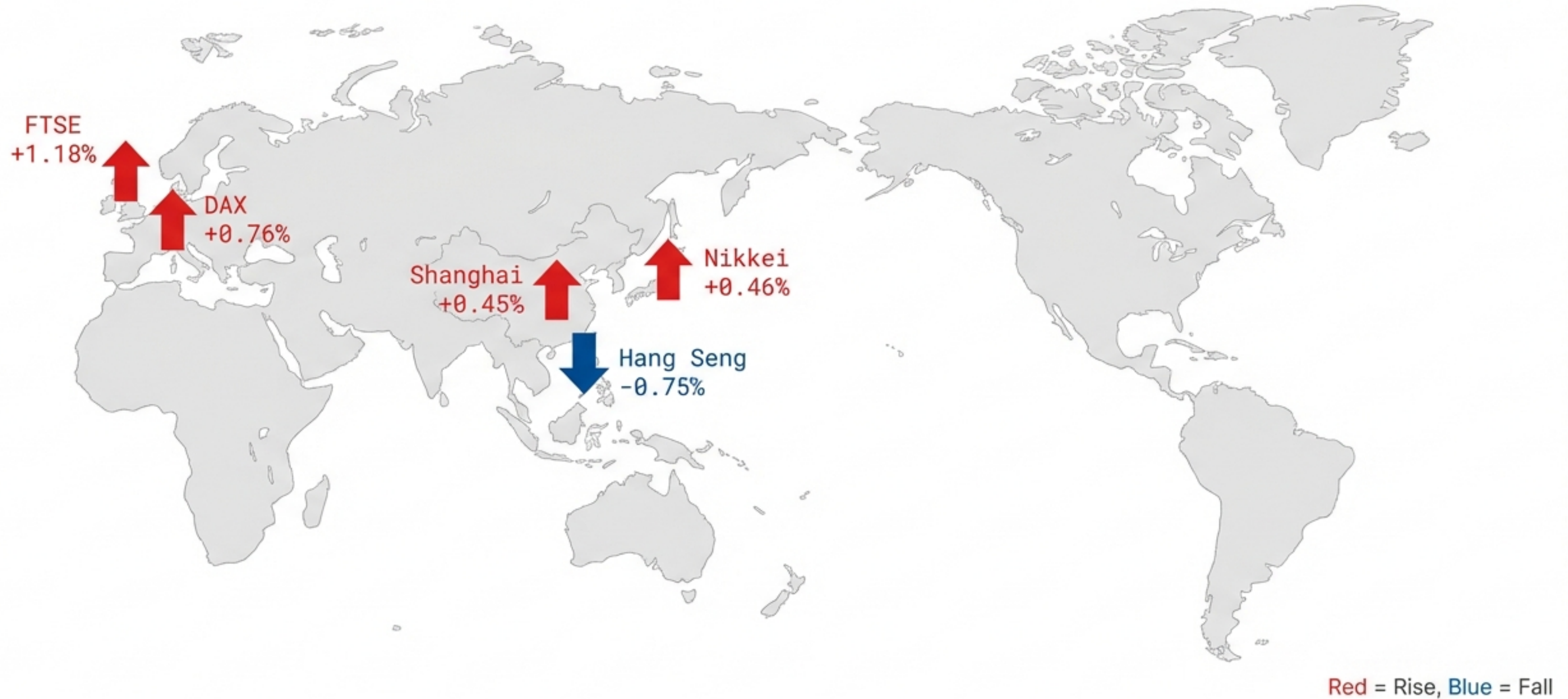
Pretendard

엔비디아 효과와 변동성 확대



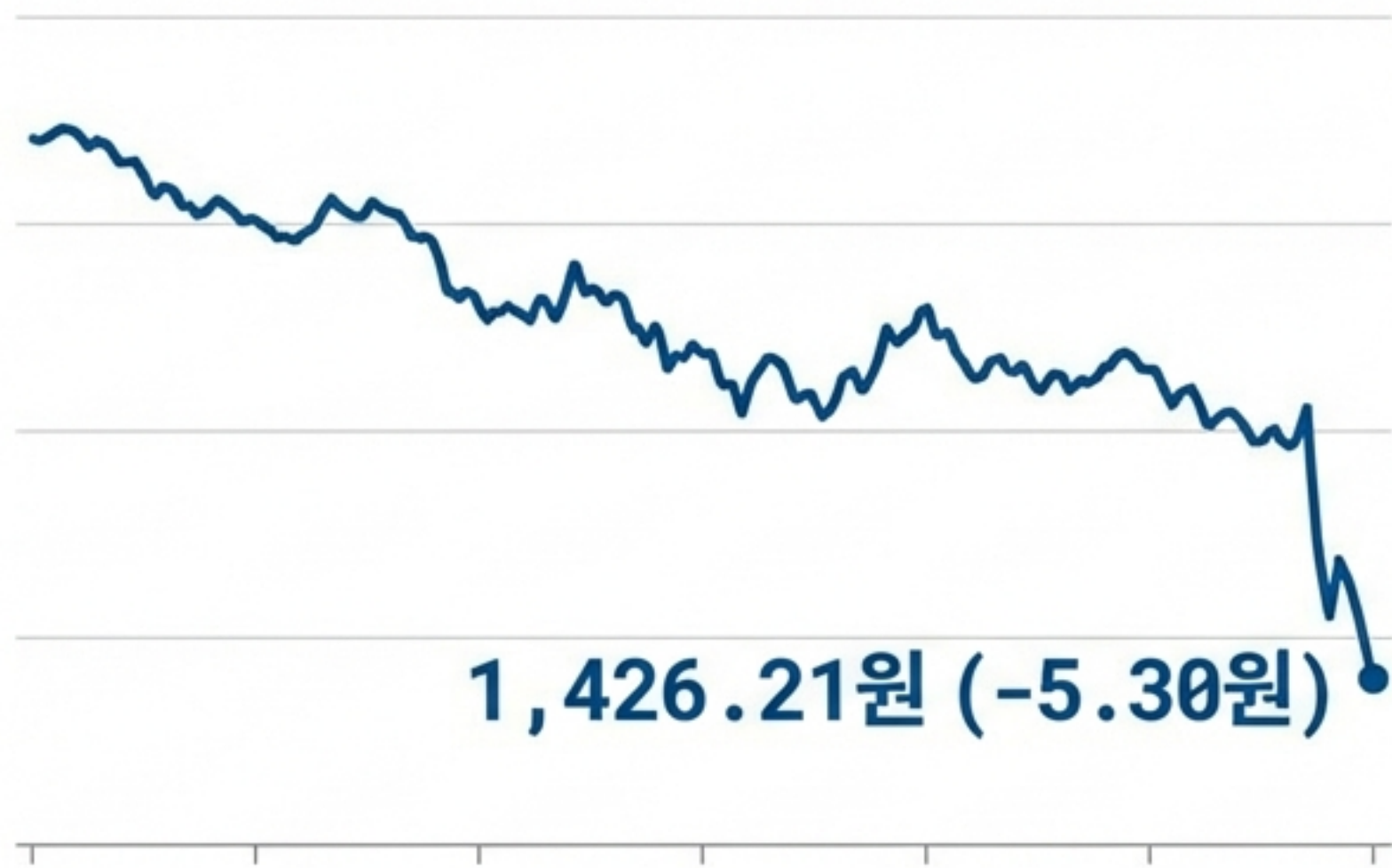
Insight: AI rally pauses as market digests volatility.

글로벌 투자심리: 완만한 위험 선호



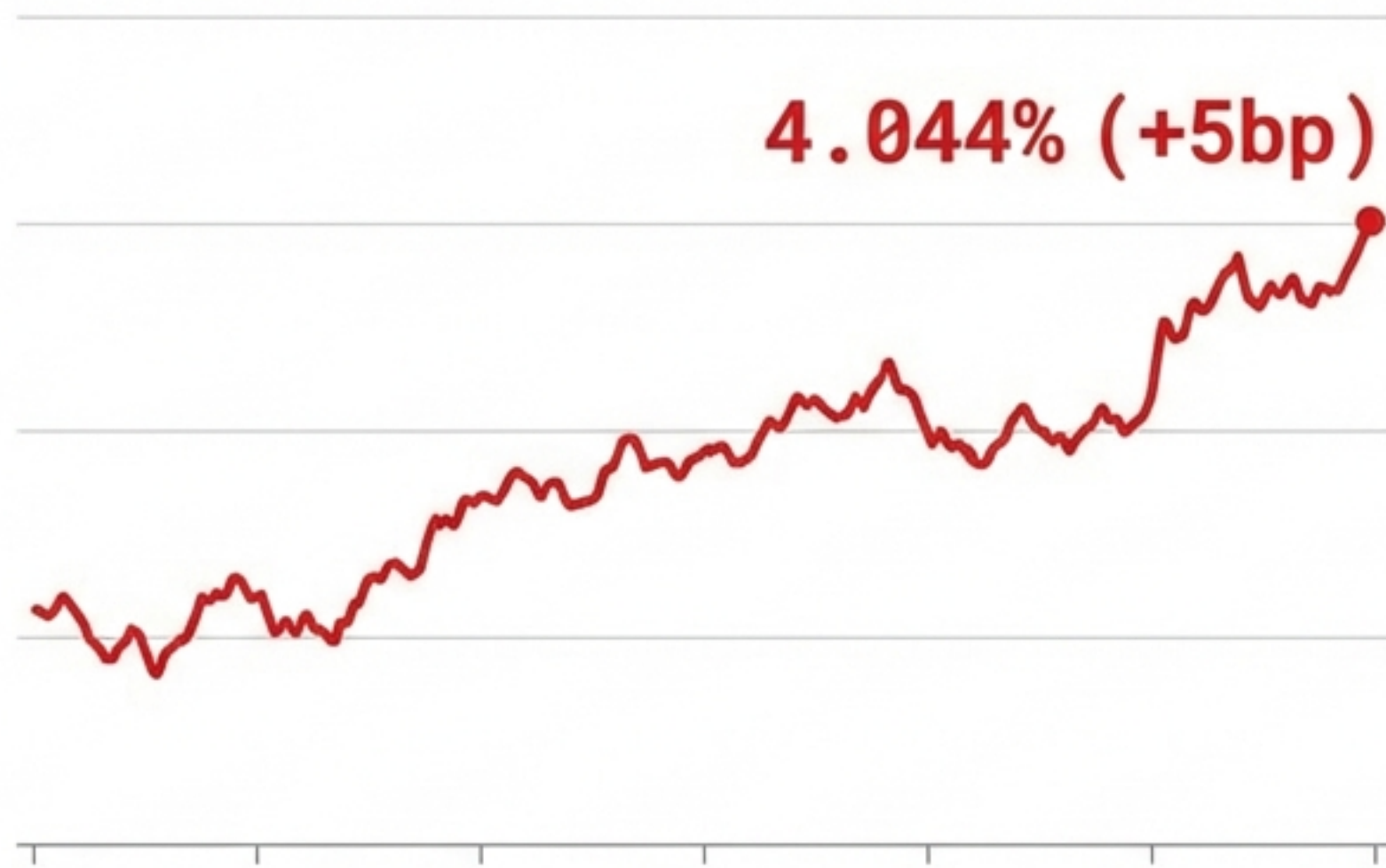
환율 안정과 금리 상승의 공존

USD/KRW Exchange Rate



Won Strength

US 10Y Treasury Yield



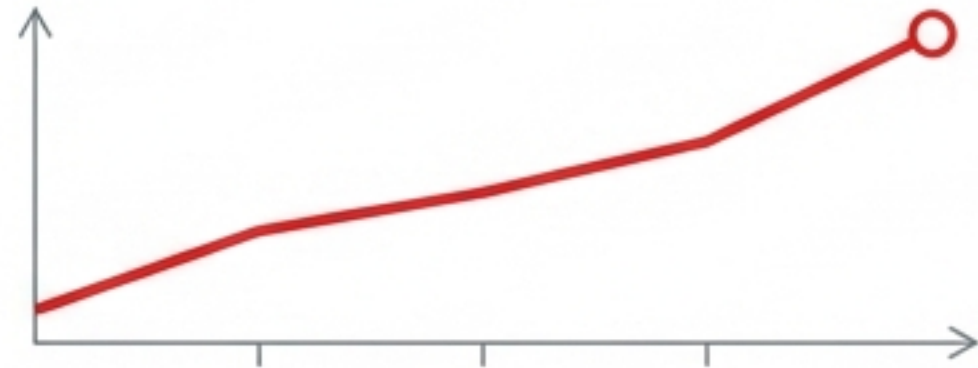
FOMC Hawkish

Red = Rise, Blue = Fall

원자재와 대체자산의 동반 상승



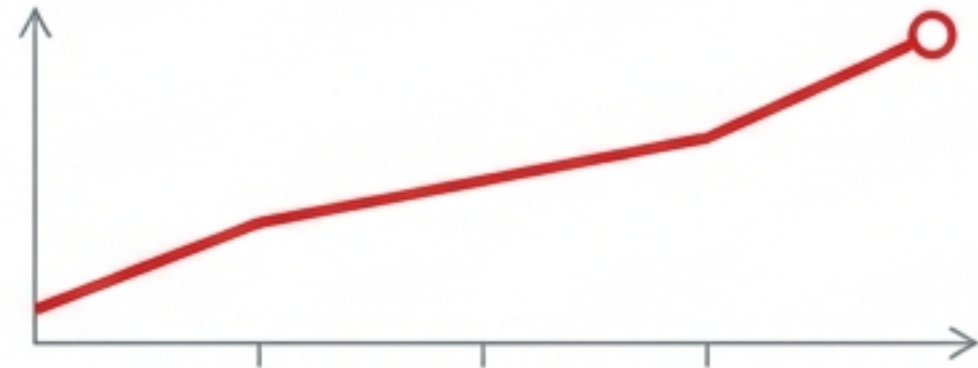
WTI Crude
\$65.47
(+\$2.62)



Geopolitics



Gold
\$103,000
(+\$18)



Safe Haven



Bitcoin
\$103,000
(+\$1,240)



ETF Inflows

Liquidity is lifting both Risk and Safety assets.

언론 동향: 서울의 환호 vs 뉴욕의 신중

코스피 6000에 서학개미 드디어 돌아오나

국내 증시 활황 기대감 고조... 개인 투자자
매수세 유입 전망.

삼성증권 '올해 코스피 7000 웃돌 것'

반도체 및 수출 호조 힘입어 강력한 상승 랠리
예측.

US Fed Rate Cut Cycle Entering Late Stage

Analysts warn of diminishing impact as central
bank navigates final policy adjustments.

Nvidia saves the market, but volatility remains

Tech giant's performance provides temporary
relief, underlying economic uncertainty persists.

Red = Rise, Blue = Fall

주간 일정: 운명의 24시간

Feb 26 (Today/Thu)

- US New Jobless Claims

Feb 27 (Tomorrow/Fri)

한국은행 금리결정 (BoK Rate Decision) - 10:00 AM →

US PPI (Producer Price Index)

Red = Rise, Blue = Fall

차주 전망: 제조업 경기 진단

Mar 2 (Mon)

US ISM Manufacturing
PMI (Est: 51.2)

Mar 3 (Tue)

US ISM Manufacturing
Employment/Prices

Mar 4 (Wed)

China Manufacturing
PMI

US ADP Employment

Red = Rise, Blue = Fall

투자 전략: 파도를 타되 리스크를 주시하라

1. MOMENTUM

KOSPI **6,300** breakout is valid.
Target **7,000**↑. **Maintain overweight**
on Semi/AI/Bio. (반도체/AI 비중 유지)

2. MACRO CHECK

Watch the BoK decision (Feb 27)
and US Inflation data closely.

3. FICC SIGNALS

Weak Dollar/Strong Won↓ is
positive, but **rising** Oil prices are a
margin risk.

4. ACTION

Focus on '**Hero**' stocks (Samsung/SK)
but monitor **Foreigner** net buying.

Red = Rise, Blue = Fall

고지사항 (Disclaimer)

This report is for informational purposes only and does not constitute investment advice. The data is based on information available as of February 26, 2026. Past performance is not indicative of future results. Please consult a financial advisor before making investment decisions.